

AN INDUSTRY PERSPECTIVE ON FOREST BIOSECURITY



brazilian tree industry

PATRICIA MACHADO

WORLD FOREST CONGRESS – SEOUL 2022

BRAZILIAN PLANTED TREE INDUSTRY

The Brazilian Tree Industry (IBÁ) is the association responsible for institutionally representing the planted tree production chain, from the fields to the factory, with its main stakeholders.

47 COMPANIES + 9 STATE ASSOCIATIONS



PLANTED
AREA

9.55

MILLION HECTARES



CONSERVED
AREA

6.05

MILLION HECTARES

ECONOMIC AND SOCIAL INDICATORS

- **6,0%** the representativeness in the national industry
- **4.8%** of Brazil's total exports
- **0.9%** of all taxes collected
- **US\$ 8.9 billion** trade balance
- **R\$ 12.1 billion** in federal taxes and tributes (**0.9%** of the total taxes)

R\$ 686
MILLION

Social and
Environmental
Programs



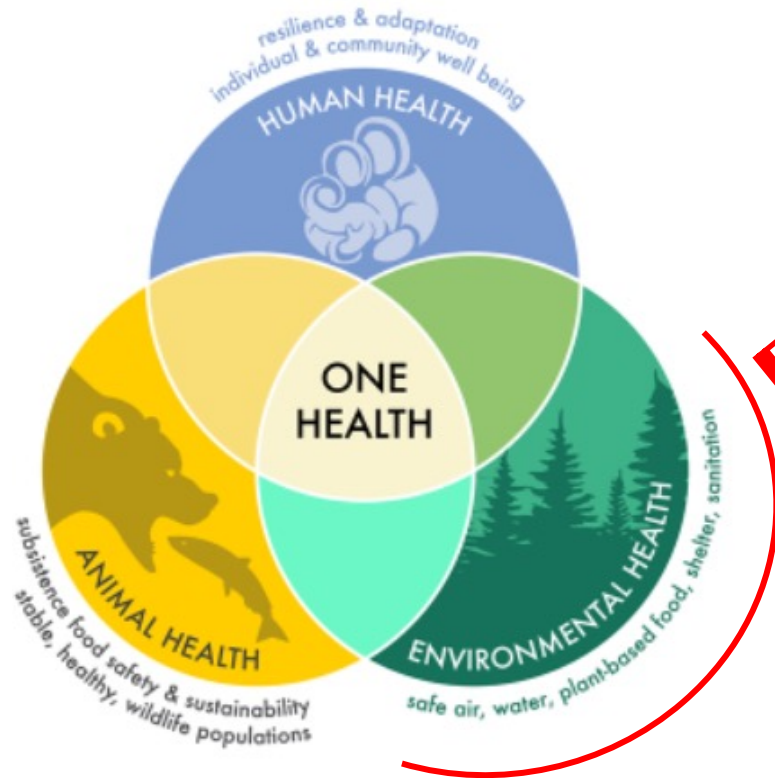
2.9

Million Jobs
Created

6.7

Million People Benefited in
2.256 cities

ONE HEALTH



- ✓ Has environmental health been taken into account properly?
- ✓ What has been done for food security and the supply of wood and fiber?
- ✓ Are we protecting the native species?



ORGANIZATIONAL STRUCTURE OF THE FOREST PROTECTION COMMITTEE

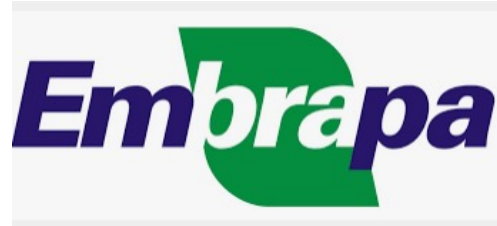


WORKING PLAN

- ✓ Pesticide affairs
- ✓ Pesticides application methods
- ✓ Pesticides policies of FSC
- ✓ International agreements/conventions
- ✓ Biological control
- ✓ Pest risk assessments and contingency plans
- ✓ Legislation and draft bills
- Public consultation



COOPERATION IN FOREST PROTECTION



Ministry of Agriculture,
Livestock and Food
Supply

The Brazilian Agricultural
Research Corporation

Vegetal Health Committee
created by Argentina,
Brazil, Chile, Paraguay and
Uruguay



National Wood Wasp
Biological Control
Program (*Sirex noctilio*)



Forest Protection
Coopeative Program



Biological Control of
Eucalyptus Pests



OPPORTUNITIES

- ✓ Spreading information about the planted tree sector to different forums and raise awareness regarding plant protection
- ✓ Maintaining a direct dialogue with the Government and other stakeholders
- ✓ Maintaining a dialogue based on science and transparency
- ✓ Achieving results more efficiently



CHALLENGES

- ✓ Brazil - continental and tropical country
- ✓ High demand on government services/funding for many different crops
- ✓ Focal point needed in government for the forest protection
- ✓ Maintaining the balance between timing of private sector and the Government
- ✓ Research and applicable results take time

FUTURE DEMANDS



9.5 billion people by 2050



Higher demand for forest based products



Challenges to the planted forest sector

New borders

Climate changes

New pests

Shared challenges!!





We work better together



- How can we improve forest biosecurity worldwide?
- How can we strengthen our actions?
- How has Inter-institutional cooperation been done in your country?

THANK YOU



brazilian tree industry

Patricia.machado@iba.org